



SEATON

Seaton is the only gateway town to the Jurassic Coast where rocks from all three geological periods can be viewed in their natural environment. There are fossil bearing Jurassic rocks to the east, vibrant Triassic cliffs just before Axmouth Harbour and the striking white outcrop of Cretaceous chalk cliffs of Beer.

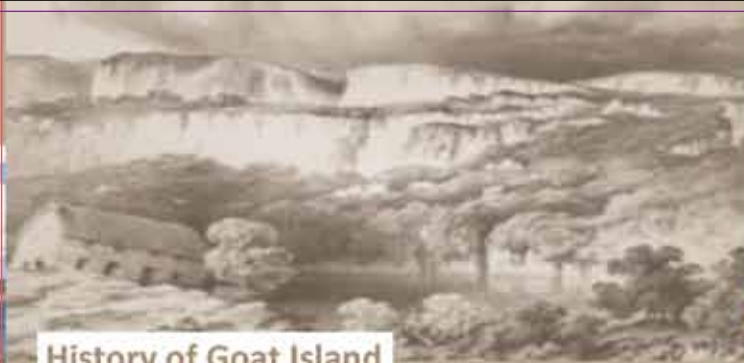
Seaton also boasts a mile long pebble beach, which can be walked comfortably on the esplanade.



AXMOUTH

Axmouth is an attractive village on the banks of the Axe Estuary. A viewing platform over the Axe is a good place to see a variety of birds such as gulls and terns, together with numerous waders. The village dates to at least the 7th Century and is believed to be an end of the Roman Fosse Way.

As well as numerous listed buildings, the village boasts two pubs and a campsite. Axmouth harbour nestles in the river just before it reaches the sea. Today, the population numbers are around 500.



History of Goat Island

The most famous part of the Undercliffs National Nature Reserve. The great landslide occurred on Christmas Eve 1839 when a massive section of cliff, now known as Goat Island, slid towards the sea, leaving behind it a deep chasm.

The landslide became very famous and was visited by thousands of people, including Queen Victoria. It was also the largest landslide to ever be scientifically studied.

Today Goat Island is managed by Natural England. The grassland is cut and raked every year to provide the right conditions for a wide range of rare plants and insects to thrive.



CONTACT US

Seaton Tourist Information at Seaton Jurassic
for further information
01297 300390
SAT NAV postcode **Seaton EX12 2WD**



AXMOUTH
PARISH COUNCIL

WALK to GOAT ISLAND

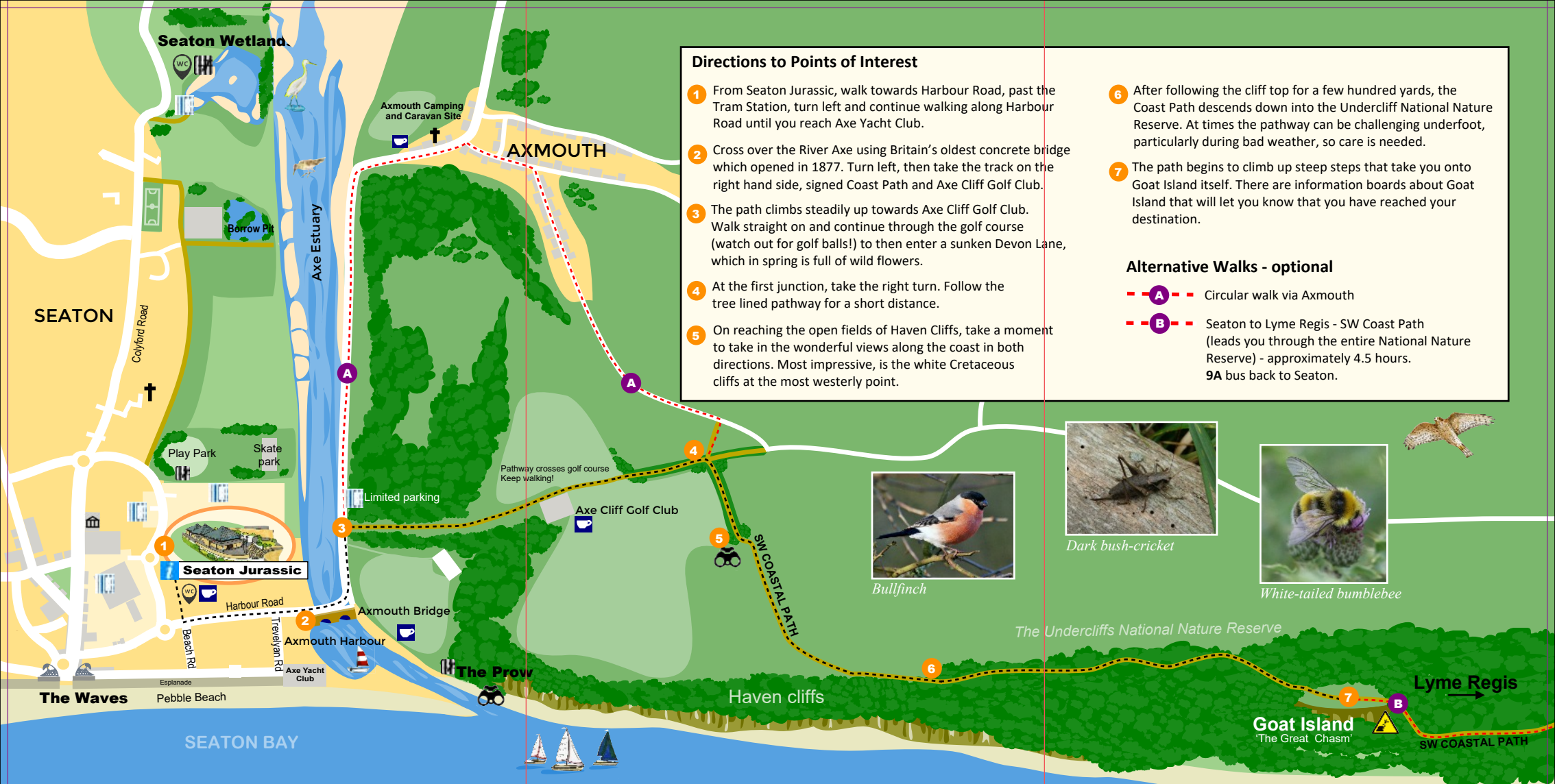
'The Great Chasm'



A historic walk that takes you on the South West Coast Path to the most famous part of the Undercliffs National Nature Reserve - a unique habitat.

Experience the stunning views of the Jurassic Coast, wildlife and rare plants.

See inside for details



Directions to Points of Interest

- 1 From Seaton Jurassic, walk towards Harbour Road, past the Tram Station, turn left and continue walking along Harbour Road until you reach Axe Yacht Club.
- 2 Cross over the River Axe using Britain's oldest concrete bridge which opened in 1877. Turn left, then take the track on the right hand side, signed Coast Path and Axe Cliff Golf Club.
- 3 The path climbs steadily up towards Axe Cliff Golf Club. Walk straight on and continue through the golf course (watch out for golf balls!) to then enter a sunken Devon Lane, which in spring is full of wild flowers.
- 4 At the first junction, take the right turn. Follow the tree lined pathway for a short distance.
- 5 On reaching the open fields of Haven Cliffs, take a moment to take in the wonderful views along the coast in both directions. Most impressive, is the white Cretaceous cliffs at the most westerly point.

- 6 After following the cliff top for a few hundred yards, the Coast Path descends down into the Undercliff National Nature Reserve. At times the pathway can be challenging underfoot, particularly during bad weather, so care is needed.
- 7 The path begins to climb up steep steps that take you onto Goat Island itself. There are information boards about Goat Island that will let you know that you have reached your destination.

Alternative Walks - optional

- A - Circular walk via Axmouth
- B - Seaton to Lyme Regis - SW Coast Path (leads you through the entire National Nature Reserve) - approximately 4.5 hours. 9A bus back to Seaton.



Bullfinch



Dark bush-cricket



White-tailed bumblebee

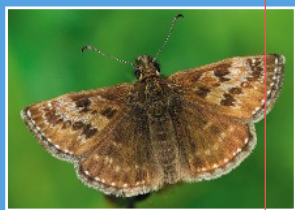


KEY			
	Road		Parking
	Goat Island Trail		Viewpoint
	Footpath		Tourist Information
	Footpath via Axmouth - optional		Picnic Site
	Church		Museum
	Refreshments		Cliff Fall
	Toilets		Points of Interest

Disclaimer: The Goat Island map is a guide only. Please be aware, we accept no liability for damage, loss or injury of any nature on this trail.



Bee orchid



Dingy skipper



Greater butterfly orchid



Pyramidal orchid

Culverhole Point